

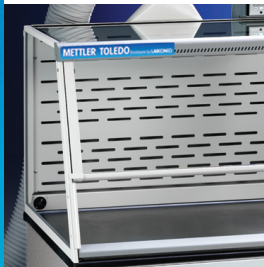
METTLER TOLEDO Enclosures by Labconco

Balance Enclosures



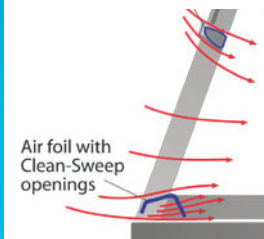
Greatest Stability

A chemical resistant marble base provides the greatest amount of stability.



Static-dissipative Materials

Epoxy-coated aluminum and steel and tempered safety glass dissipate static, reducing potential for weighing errors.



Air foil with Clean-Sweep openings

Maximum Containment

Patented Clean-Sweep™ air foil allows air to sweep the work surface to maximize containment.



Built-In Airflow Monitor

Alerts the user to face velocities outside the preset range. Ensures operator safety at all times.



Safety Enclosures

Protection During Weighing Processes

METTLER TOLEDO Enclosures by Labconco are specifically designed to protect the analyst during the weighing process. The patented Clean-Sweep™ air foil will maximize the containment of powders, particulates, and fumes to ensure operator safety. The ergonomic design and interior dimensions make this product ideal for micro and analytical balances, and the granite work surface will provide the greatest stability for your products.

Technical Data

Dimensions

- 3950310: 36' w x 29.0" d x 37.1" h
- 3970100: 36.0" w x 29.0" d x 28.6" h
- 3930310: 36.0" w x 29.0" d x 28.6" h
- Internal working depth: 23.4"

Construction

- Glacier white and gray, dry powder epoxy-coated aluminum frame and steel rear plenum and baffle.
- Granite work surface
- 1/4" thick tempered safety glass front sash, sides, and top
- Ergonomic air foil with aerodynamic Clean-Sweep™ airflow openings maximizes containment
- Upper containment sash foil directs contaminants away from the operator
- Upper dilution air supply sweeps clean air to the back of the sash to keep contaminants away from the operator
- 8" sash opening limits exhaust demand

Alarm

- Supplied with Guardian Airflow Monitor
- Continuously monitors airflow with a Green LED that glows when airflow is within range
- A Red LED glows and an audible alarm sounds when the airflow is outside the set point range

Testing

- SEFA 1-2002
- Modified ASHRAE 110-1995
- ANSI Z9.5-1993

All Systems Include

- Granite work surface
- Guardian airflow monitor
- Waste chute
- Necessary ductwork

Order Information

Description	Fisher Scientific Part No.
3' W Filtered Enclosure with built-in blower	01913701
3' W HEPA System Enclosure including separate FilterMate Portable Exhauster	01913703
3' W Direct Enclosure Requires ducting or FilterMate	01913702
FilterMate Portable Exhauster for use with Carbon Filter. Filter not included.	01913704
FilterMate Portable Exhauster for use with HEPA & Carbon Filter. HEPA Filter included, Carbon Filter required.	01913705

Accessories

Description	Fisher Scientific Part No.
Organic Carbon Filter for FilterMate	01913706
Formaldehyde Carbon Filter for FilterMate	01913707
Ammonia Carbon Filter for FilterMate	01913708
HEPA Filter for FilterMate	01913709
HEPA Filter for 3' Filtered System	01913710

Description	Fisher Scientific Part No.
3' Base Stand - Fixed Feet	01913716
Fluorescent Light Kit for 3930310 and 3970100	01913717
Replacement Bag-In / Bag-Out for FilterMate	01913711
Replacement Bag-In / Bag-Out for Filtered System	01913712
Organic Carbon Filter – 3' Filtered System	01913713
Formaldehyde Carbon Filter – 3' Filtered System	01913714
Ammonia Carbon Filter - 3' Filtered System	01913715
Utility Shelves	01913718
Tissue Holder	01913720
Bottle Holder	01913719
Duct Transition Adapter – Upper – 5" ID	01913721
Duct Transition Adapter – Upper – 6" OD	01913722
Duct Transition Adapter – Lower – 5" ID	01913723
Duct Transition Adapter – Lower – 6" OD	01913724
Canopy Connection for 3' Filtered System	01913725
Printer Stand for Filtered System	01913726
Vibration Isolation Pads – 2" x 2" – Set of 6	01913727

www.mt.com/balance-enclosures

For more information



For customer service, call 1-800-766-7000.
To fax an order, use 1-800-926-1166.
To order online: www.fishersci.com

BN02011110